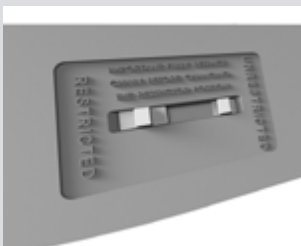




### KEY FEATURES

- ANDO™ manual chain winders come in a large range of standard and special powder coat finishes.
- The corrosion resisting stainless steel chain and Polesium™ winder base protect not only the winder but also the window sash and sill. If a winder should corrode the window will almost certainly be damaged.
- Chain winder can be key locked.
- Chain winder control knob can be folded down.
- The length of the chain can be reduced on heavy sashes. This reduces the chance of damaging the projecting chain under high wind loads when sash is in the open position.
- Winder fixed to reinforced (thickened) sections on sash and frame to ensure fixing screws don't come loose.
- Winder designed to suit flyscreening.
- Available in a range of standard and special powdercoat finishes to match your window.



#### CHAIN RESTRICTION SWITCH

Inbuilt restriction switch to easily restrict chain length where window restriction is required.



#### ERGONOMIC FOLD DOWN HANDLE

Designed to compliment the shape of the winder. Simply pull to fold down.



#### LOCK INDICATOR & 6 DISC CYLINDER

Allows you to clearly see if the winder is in the locked or unlocked position.

Can be keyed alike.



#### EASYLINK ATTACHABLE SASH PLATE

Easylink is a simple one way fitment to simplify Chainwinder installation. Increases efficiency by reducing installation time.

### DIMENSIONS

Height	50mm
Width	280mm
Depth	50mm

### SUITABLE FOR USE WITH

-  Series 516 Residential Awning Window
-  Series 517 Residential Awning Window
-  Series 616 Designer Awning Window
-  Series 726 ThermalHEART® Awning Window
-  Series 456 Commercial Awning Window
-  Series 466 Architectural Awning Window